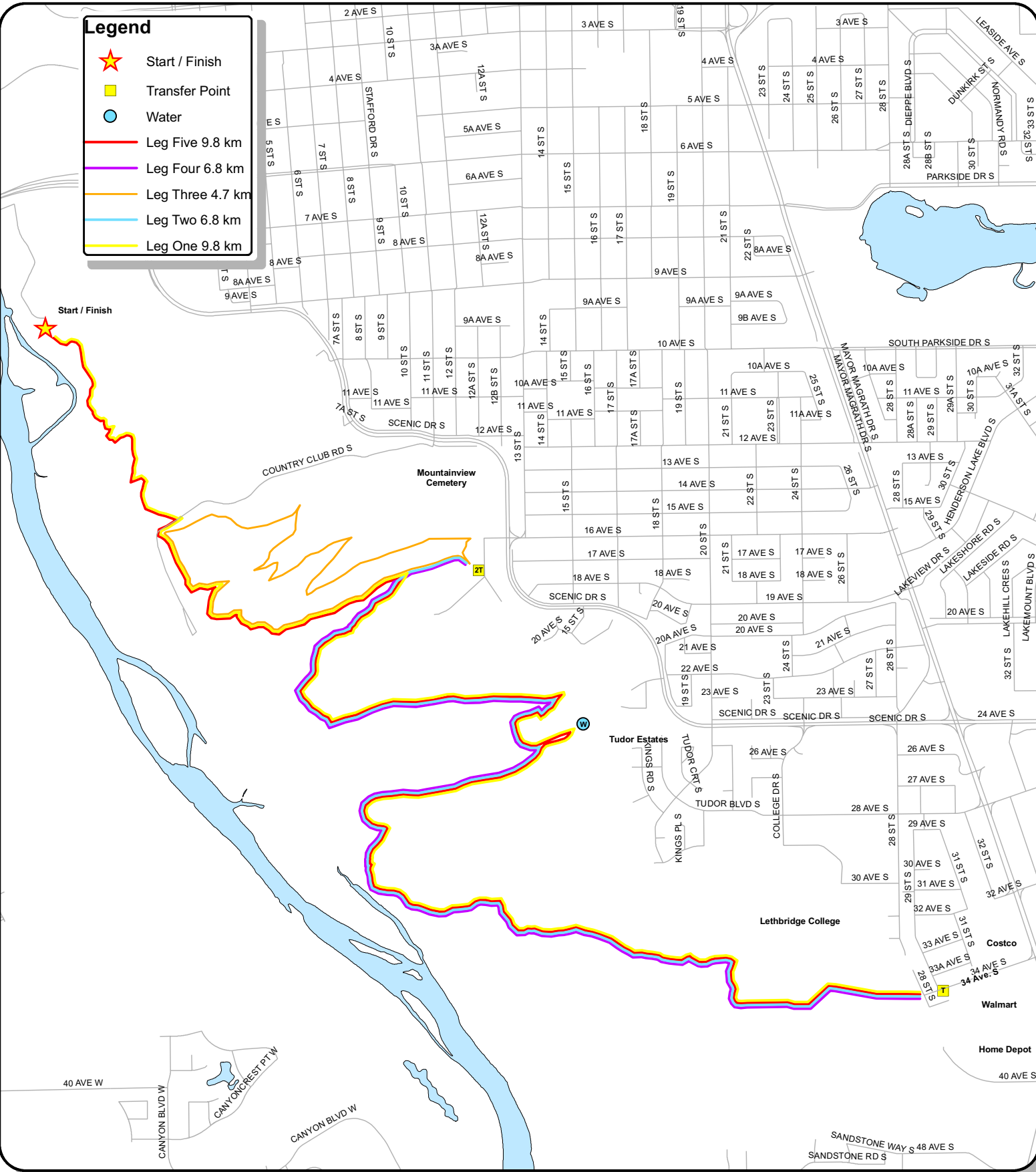


Legend

-  Start / Finish
-  Transfer Point
-  Water
-  Leg Five 9.8 km
-  Leg Four 6.8 km
-  Leg Three 4.7 km
-  Leg Two 6.8 km
-  Leg One 9.8 km



Coulee Cactus Crawl

June 14, 2008

12:00 Start



This map is illustrative only. The City of Lethbridge does not warrant or represent, with regard to the correctness, accuracy and/or reliability of the data. Source of information: City of Lethbridge, Geographic Information System Data - compiled from field survey data and historic records. ©2007 Transmap Meridian (276), 1:50,000 scale, aerial photography. This map was produced by: Smart Data Systems, Information Technology City of Lethbridge, AB, Canada. All rights reserved. No part of this map may be reproduced in any form or by any means without written consent from the City of Lethbridge. ©2007 City of Lethbridge, AB, Canada. Published June 2007.